



72301X^{Q&As}

Avaya Aura Communication Applications Support Certified Exam

Pass Avaya 72301X Exam with 100% Guarantee

Free Download Real Questions & Answers **PDF** and **VCE** file from:

<https://www.geekcert.com/72301x.html>

100% Passing Guarantee
100% Money Back Assurance

Following Questions and Answers are all new published by Avaya
Official Exam Center

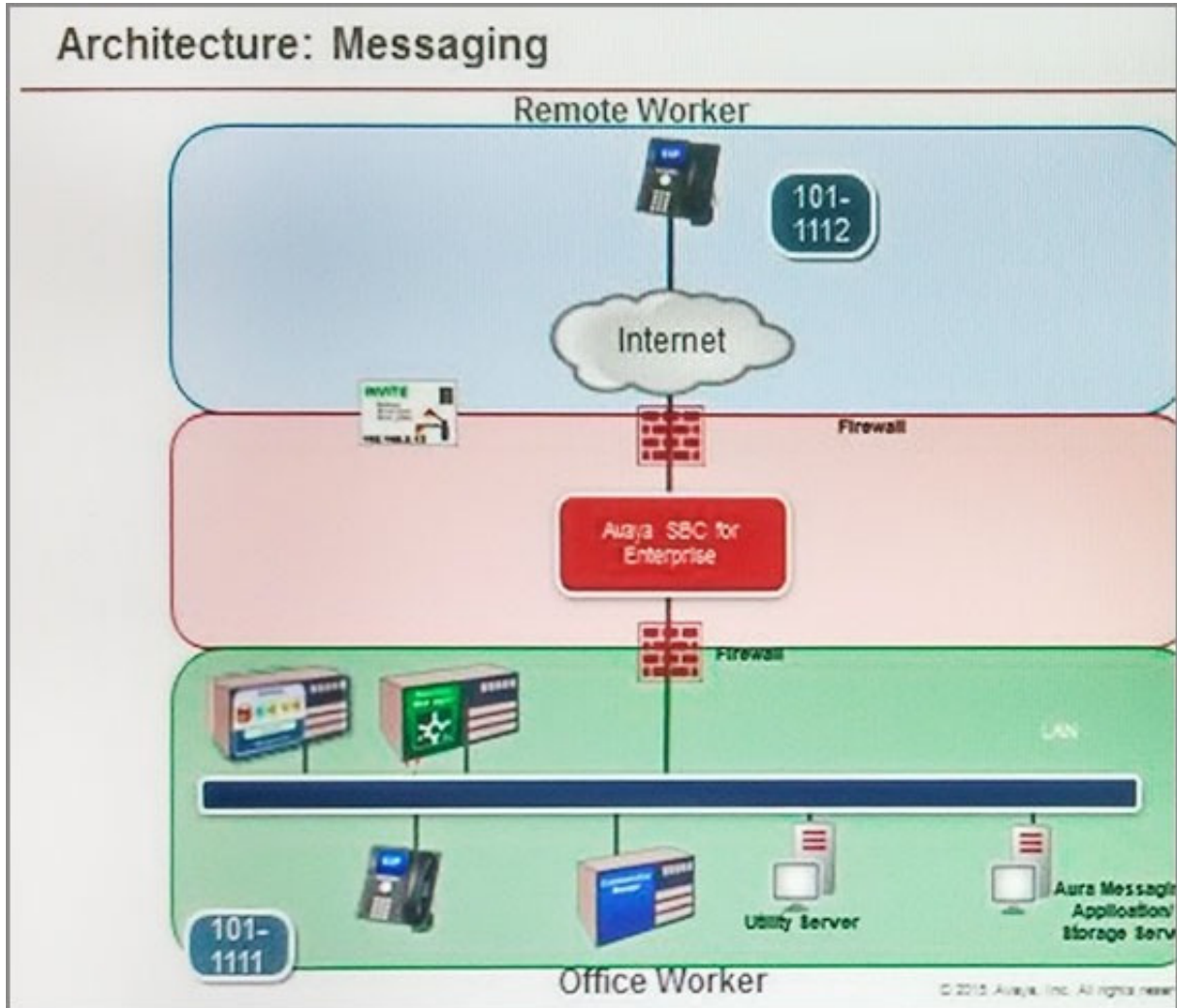
-  **Instant Download** After Purchase
-  **100% Money Back** Guarantee
-  **365 Days** Free Update
-  **800,000+** Satisfied Customers





QUESTION 1

Refer to the exhibit.



After some system maintenance was completed over the weekend, a customer calling from the office states they hear a fast busy when trying to access their voicemail. Avaya support verifies local network connectivity is up and Avaya Aura Messaging server is registering no alarms. A SIP trace displays a 404 Not Found error message. Based on what is already working, to where can the issue potentially be isolated?

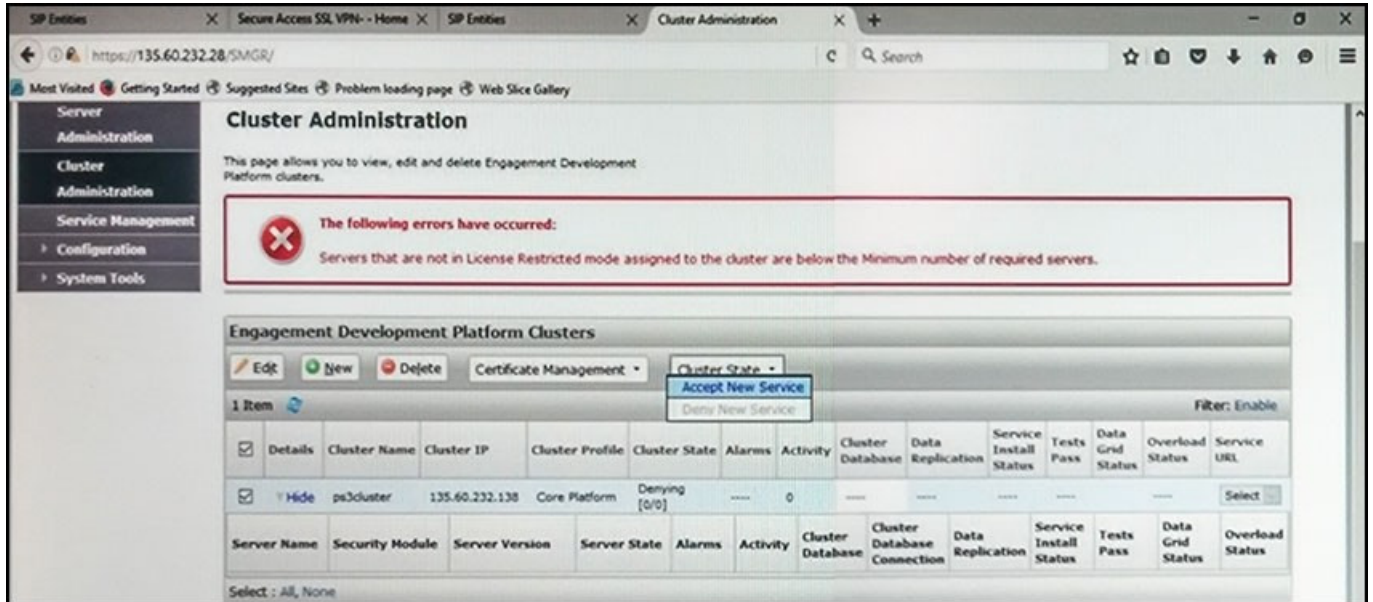
- A. endpoint routing configuration issue
- B. interoperability testing
- C. network outage
- D. routing configuration issues

Correct Answer: D



QUESTION 2

Refer to the exhibit.



In the Cluster Administration screen of a PresenceServices cluster, when you try to change the cluster state to Accept New Service, you receive the error:

Servers that are not in License Restricted mode assigned to the cluster are below the Minimum number of required servers.

You check that a server has been administered under Engagement Development Platform > Server Administration which shows green check under License Mode, and a System State of Denying.

Which action needs to be taken to solve this problem?

- A. Edit the Cluster, access the Servers tab, and assign the server to the cluster; then set the cluster to Accept New Service.
- B. Under Engagement Development Platform > Server Administration, select the server and change the System State to Accept New Service, then return to the Cluster Administration screen and set the cluster to Accept New Service.
- C. Obtain and install an Avaya Breeze™ license on webLM with more instances of Avaya Breeze™ nodes.
- D. Edit the cluster to change the cluster profile from Core Platform to General Purpose.

Correct Answer: B

QUESTION 3

When enabling Remote Worker telephones to access a Public Directory, which additional configuration item needs to be configured on the Avaya Session Border Controller for Enterprise (SBCE)?



- A. an LDAP End Point Policy Group
- B. a reverse proxy for LDAP
- C. an application relay for LDAP
- D. an LDAP Server Flow

Correct Answer: A

<https://downloads.avaya.com/css/P8/documents/101001325>

QUESTION 4

A customer reports that Instant Messaging (IM) and Presence are not working for one or two users. Where would you go to check that IM and Presence have been enabled for the affected users?

- A. Use Avaya Aura System Manager (SMGR) web GUI to access the Engagement Development Platform > Service Management click on List Presence Users.
- B. Use System Manager (SMGR) web GUI to access User > Users Management > Manage Users > Communication Profile. Ensure that the presence profile is enables and that the right presence server is selected.
- C. Use SSH to Avaya Breeze TMan and run "display user xxxx" where xxxx is the station number.
- D. Use Avaya Aura System Manager (SMGR) web GUI to access User Management>; Manage Users > More Actions > Presence Users. Ensure that the presence profile is enables and that the right presence server is selected.

Correct Answer: B

QUESTION 5

Which two trace tools are available for Session Manager? (Choose two.)

- A. theCallTracecommand on the Session Manager Command Line Interface
- B. thetraceSMcommand on the Session Manager Command Line Interface
- C. Trace Viewer in the System Manager GUI
- D. theList tracecommand on the Session Manager Command Line Interface
- E. Pcap

Correct Answer: BC

[Latest 72301X Dumps](#)

[72301X PDF Dumps](#)

[72301X VCE Dumps](#)