



9A0-389^{Q&As}

Adobe Campaign Developer

Pass Adobe 9A0-389 Exam with 100% Guarantee

Free Download Real Questions & Answers **PDF** and **VCE** file from:

<https://www.geekcert.com/9a0-389.html>

100% Passing Guarantee
100% Money Back Assurance

Following Questions and Answers are all new published by Adobe
Official Exam Center

-  **Instant Download** After Purchase
-  **100% Money Back** Guarantee
-  **365 Days** Free Update
-  **800,000+** Satisfied Customers





QUESTION 1

A store runs a satisfaction survey every year. The purpose of the survey is to measure the change in satisfaction over the years.

How should you store the survey responses?

- A. An attribute in the recipient schema.
- B. An archived field in the survey.
- C. An attribute in the broad log schema.
- D. A database field in the survey.

Correct Answer: B

QUESTION 2

How would you set up the query of a predefined filter in order to get all recipients with blacklisted email addresses?

- A. no longer contact by direct mail or no longer contact by email or status for info on the e-mail equal to Quarantine
- B. no longer contact (by any channel) or no longer contact by email or status for info on the e-mail equal to Blacklisted
- C. no longer contact (by any channel) and no longer contact by email and status for info on the e-mail equal to Blacklisted
- D. no longer contact by direct mail and no longer contact by phone and status for info on the e-mail equal to Quarantine

Correct Answer: B

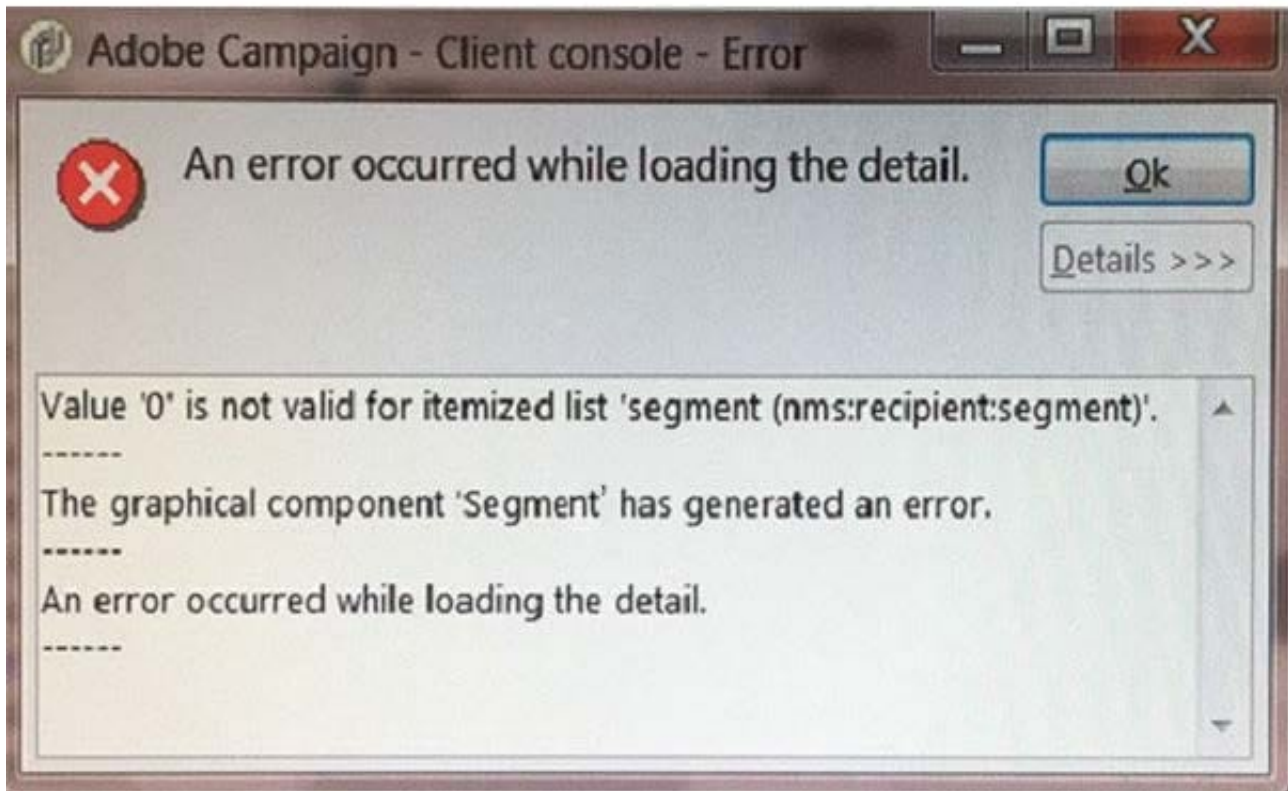
QUESTION 3

A new attribute is added to the recipient schema. The error message shown below appears when opening the recipient.

What is the cause of the error?



```
<srcSchema name="recipient" namespace="demo">  
  
  <enumeration basetype="short" default="bronze" name="segment">  
    <value label="Bronze" name="bronze" value="1"/>  
    <value label="Silver" name="silver" value="2"/>  
    <value label="Gold" name="gold" value="3"/>  
  </enumeration>  
  
  <element desc="Recipient table (profiles" img="nms:recipient.png" label="Recipients"  
    labelSingular="Recipient" name="recipient">  
  
    <attribute enum="segment" name="segment" type="short"/>  
  
  </element>  
  
</srcSchema>
```



- A. The segment attribute is wrong.
- B. The navtree definition is incorrect.
- C. The value of the segment in the recipient record is incorrect.
- D. The form definition is incorrect.

Correct Answer: A



QUESTION 4

How can you give access to a view without giving access to its source folder?

- A. Provide only read access to the specific parent node.
- B. Do not give read access on the parent node of the source folder.
- C. Set the "Restrict to information found in sub-folders of" tab to the specific view.
- D. The user must be able to access the source folder to access a view.

Correct Answer: B

Reference: <https://docs.campaign.adobe.com/doc/archives/en/610/platform-v6.1-en.pdf> (page 211)

QUESTION 5

Which two parts of this query could potentially cause performance problems? (Choose two.)

Filter settings

Filter conditions Add Delete

| | Expression | Operator | Value |
|-----|---|---------------|---------------------|
| | Status (@status) | equal to | Client |
| And | Recipient delivery logs (broadLog) | exist such as | |
| And | Tracking logs (trackingLog) | exist such as | |
| And | Source URL (url/@source) | contains | google.com |
| And | Event date for Recipient delivery logs (... after | | 23/06/2014 00:00:00 |

- A. The "equal to" operator is not efficient.
- B. The "url" is a table with high volumes.
- C. The "tracking log" is a table with high volumes.
- D. The "exist such as" operator is not efficient.

Correct Answer: CD