



ACD200^{Q&As}

Appian Certified Senior Developer

Pass Appian ACD200 Exam with 100% Guarantee

Free Download Real Questions & Answers **PDF** and **VCE** file from:

<https://www.geekcert.com/acd200.html>

100% Passing Guarantee
100% Money Back Assurance

Following Questions and Answers are all new published by Appian
Official Exam Center

-  **Instant Download** After Purchase
-  **100% Money Back** Guarantee
-  **365 Days** Free Update
-  **800,000+** Satisfied Customers





QUESTION 1

During the design review, you identified slow-operating expression rules querying a specific data store.

Which metric from the `data_store_details.csv` file will help you understand the "number of operations against data store?" (Choose the best answer.)

- A. Transform Count
- B. Query Count
- C. Total Count
- D. Execute Count

Correct Answer: C

The metric from the `data_store_details.csv` file that will help you understand the number of operations against data store is Total Count. This metric represents the total number of queries, inserts, updates, deletes, and executes performed against the data store during the specified time period. You can use this metric to identify which data stores are heavily used and may need performance tuning or scaling. References: [Data Store Details Report], [Data Store Metrics]

QUESTION 2

What is the lowest permission required on the data store in order to query, write, and delete data?

- A. Manager
- B. Administrator
- C. Viewer
- D. Editor

Correct Answer: C

The lowest permission required on the data store in order to query, write, and delete data is Viewer. This is because the data store permissions only control the ability to view and modify the data store object in Appian Designer, not the actual data in the database. To query, write, and delete data, the user needs to have the appropriate SQL permissions on the database tables or views that are mapped to the data store entities. References: Data Store Permissions

QUESTION 3

When creating a Web API, which two items are configured in the Administration Console? (Choose two.)

- A. LDAP Authentication
- B. API Key
- C. Connected System



D. Service Account

Correct Answer: BD

When creating a Web API, you need to configure two items in the Administration Console: an API key and a service account. An API key is a unique identifier that is used to authenticate requests to your Web API. You can create and manage API keys in the Administration Console under Integration > API Keys. A service account is a user account that is used to execute the Web API expression rule. You can select a service account in the Administration Console under Integration > Web APIs when you create or edit a Web API. References: [Web APIs], [API Keys], [Service Accounts]

QUESTION 4

You are required to test a Related Action that updates record data. You need to make sure that the correct users can access the form and that the data is updating successfully.

Which is the most appropriate testing method to achieve this using Appian?

- A. Unit Testing
- B. User Interface (UI) Testing
- C. Load Testing
- D. Performance Testing

Correct Answer: A

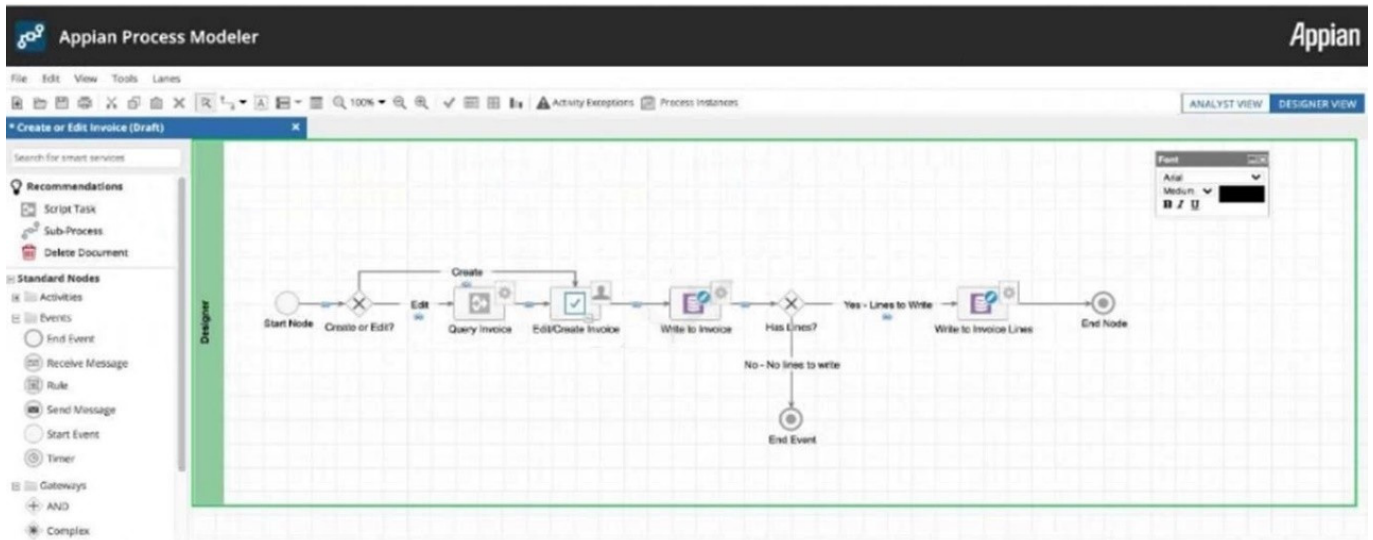
The most appropriate testing method to achieve this using Appian is Unit Testing. This is because unit testing allows you to test individual components of your application, such as forms, rules, or expressions, in isolation from other components or dependencies. Unit testing can help you verify that your Related Action works as expected for different users and data scenarios, as well as identify and fix any errors or bugs before deploying your application to production. References: Unit Testing

QUESTION 5

You are on a project where the goal is to use Appian Sites to create and edit invoices issued to customers.

This process model is being used as a related action, to edit an Invoice. You have already created a record for invoices.

Review the following image:



Which two suggestions regarding this process are valid? (Choose two.)

- A. We should consider adding a timer exception which skips the "Edit/Credit Invoice" node after 24 hours.
- B. We should add this process model as a related action on the Invoices record called "Edit Invoice."
- C. We should add two pages to the site, one of which is a Record List of Invoices, and the other which has this process model as a Report.
- D. To improve performance, we should consider removing activity chaining from all flows.

Correct Answer: AB

Two valid suggestions regarding this process are: We should consider adding a timer exception which skips the "Edit/Credit Invoice" node after 24 hours. This suggestion would improve the user experience by preventing users from editing or crediting an invoice that is too old or has been already processed by another system. A timer exception can be added to any activity node to specify a deadline for completing the task. If the deadline is reached, the process flow will follow the exception path instead of the normal path. We should add this process model as a related action on the Invoices record called "Edit Invoice." This suggestion would make it easier for users to access and execute this process from the context of a specific invoice record. A related action is a process model that can be initiated from a record or a record list in Tempo or sites. A related action can use record data as inputs and update record data as outputs.

References: Timer Exception, Create Record Actions

[ACD200 PDF Dumps](#)

[ACD200 Study Guide](#)

[ACD200 Exam Questions](#)