



ACP-610^{Q&As}

Managing Jira Projects for Data Center and Server Certification

Pass Atlassian ACP-610 Exam with 100% Guarantee

Free Download Real Questions & Answers **PDF** and **VCE** file from:

<https://www.geekcert.com/acp-610.html>

100% Passing Guarantee
100% Money Back Assurance

Following Questions and Answers are all new published by Atlassian
Official Exam Center

-  **Instant Download** After Purchase
-  **100% Money Back** Guarantee
-  **365 Days** Free Update
-  **800,000+** Satisfied Customers





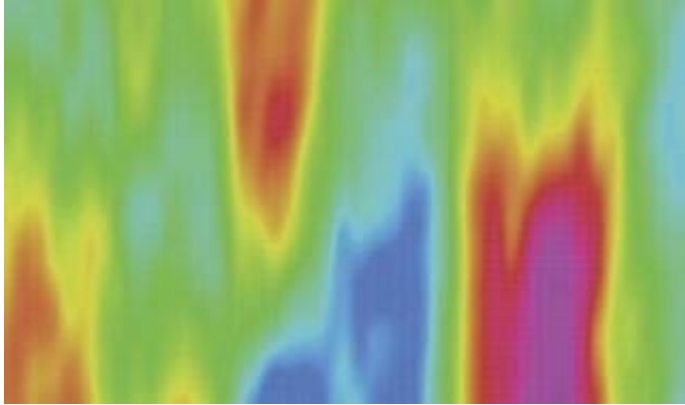
QUESTION 1

Your team often accepts new requests from outside groups during an active sprint. You want to see if such frequent scope change mid-sprint is causing bottlenecks. Which report provides the needed insight?

- A. Control Chart
- B. Burndown Chart
- C. Average Age Chart
- D. Velocity Chart
- E. Cumulative Flow Diagram

Correct Answer: E

The Cumulative Flow Diagram is the report that provides the needed insight to see if frequent scope change mid-sprint is causing bottlenecks. The Cumulative Flow Diagram shows the quantity and distribution of work items along different stages of a process over time. The report can help identify potential bottlenecks in the workflow by showing where work items accumulate or stagnate over time. For example, if the report shows a sudden increase or a wide band of work items in the "In Progress" stage, it may indicate that the team is overloaded with work or facing some blockers. If the team often accepts new requests from outside groups during an active sprint, the report can show how this affects the flow of work and the completion of the sprint goal. References: Managing Jira Projects Data Center and Server: Certification Bundle, Cumulative Flow Diagram



QUESTION 2

Gen prioritizes and triages support requests as soon as they come in. She now wants to use drag-and-drop to:

1.
quickly assign and transition them to in Progress
2.
instantly associate them with Epics

Which board view will meet these requirements?



- A. Scrum backlog
- B. Kanban board
- C. Kanban backlog
- D. Active sprints

Correct Answer: B

A Kanban board is the best option for Gen to prioritize and triage support requests using drag-and-drop. A Kanban board allows Gen to quickly assign issues to herself or other team members by dragging them to the appropriate column. She can also transition issues to In Progress by moving them across the workflow. Additionally, she can instantly associate issues with Epics by dragging them to the Epic panel on the right side of the board. A Kanban board also provides a visual overview of the current status and progress of the support requests. References: Managing Jira Projects Data Center and Server: Certification Bundle, Configuring projects | Administering Jira applications Data Center and ..., [Working with issues | Jira Software Cloud]

QUESTION 3

The team wants to flag issues using a category. Their requirements are:

1.
more than one category value can be selected on an issue
2.
new category values can be added by any user
3.
category values can be selected via a dropdown menu
4.
category values can be re-used across all projects

Which field meets their requirements?

- A. text field
- B. component
- C. user picket
- D. label
- E. checkboxes

Correct Answer: D

The label field meets the team's requirements for flagging issues using a category. Labels are a type of custom field that allow users to add one or more descriptive tags to issues. Users can add new labels on the fly, and select existing labels from a dropdown menu. Labels can be re-used across all projects, and can be searched and filtered easily. A text



field does not allow multiple values or a dropdown menu. A component does not allow multiple values or adding new values by any user. A user picker does not allow multiple values or adding new values by any user. Checkboxes do not allow adding new values by any user. References: [Adding, removing and searching for labels], [Managing Jira Projects Data Center and Server: Certification Bundle]

QUESTION 4

Development team A is consistently overestimating the work they can complete per sprint. They want to be able to compare work committed and work completed in sprints over time. Which single report provides this information?

- A. Control Chart
- B. Sprint Report
- C. Cumulative Flow Diagram
- D. Created vs Resolved Issues Report
- E. Velocity Chart

Correct Answer: E

The Velocity Chart is the best report to compare work committed and work completed in sprints over time. It shows the average amount of work that a team can complete in a sprint, based on the historical data of previous sprints. It also shows how much work was planned and how much was actually completed in each sprint. By looking at the Velocity Chart, a team can see if they are overestimating or underestimating their capacity, and adjust their planning accordingly.

Therefore, option E is correct. References: Velocity Chart, Managing Jira Projects Data Center and Server: Certification Bundle

QUESTION 5

A team currently uses a single project to track both features and tasks. They will be adopting agile practices, as follows:

1.
Features will be developed during three week iterations.
 2.
Tasks will be handled based on priority and rank and released incrementally as needed.
- they want to use agile boards with minimal disruption to their current configuration. Which solution will meet their requirements?
- A. a Kanban board in the current project with separate swimlanes per issue type
 - B. two Scrum boards for the current project, one for each issue type
 - C. a Scrum board in the current project with two quick fillers to show each issue type separately



D. a second project for tasks with a shared configuration and separate boards per project

E. a Kanban board for tasks and a Scrum board for features in the current project

Correct Answer: E

The solution that will meet the team's requirements of using agile boards with minimal disruption to their current configuration is to use a Kanban board for tasks and a Scrum board for features in the current project. This way, they can use different agile methodologies for different issue types without creating a new project or changing their existing configuration. They can use a Kanban board for tasks to handle them based on priority and rank and release them incrementally as needed. They can use a Scrum board for features to develop them during three week iterations with sprints and backlogs. The other solutions are either not feasible or not optimal for their needs. Therefore, the correct answer is E. References: [Creating a board], [Using a Scrum board], [Using a Kanban board]

[Latest ACP-610 Dumps](#)

[ACP-610 VCE Dumps](#)

[ACP-610 Practice Test](#)